



Superior Marine Manifolds

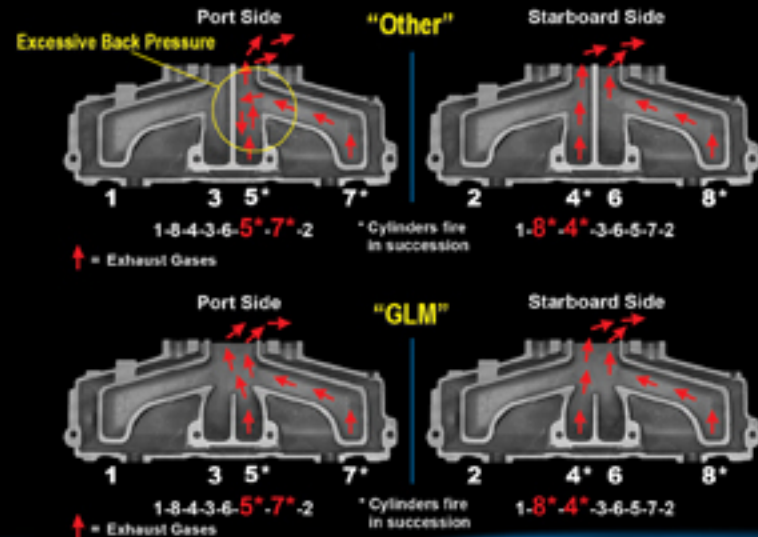
3YR
FOR CAST IRON MANIFOLDS
WARRANTY
2YR FOR ALUMINUM MANIFOLDS

100% Complete Sets
2 Manifolds
2 Elbow/Risers
All Gaskets
& Hardware



Increase Performance - Reduce Back Pressure
Add More Horsepower

Exhaust System Evaluation



V8 GM Small Block

Our fully tuned design guides exhaust gasses directly to riser without turbulence and back pressure. This increases the engines performance up to 10%. In the meantime, an additional 40% water cooling area will decrease the entire manifold body temperature significantly.

V8 GM Big Block

Our fully tuned design will reduce turbulence and enhance flow for added maximum performance. An extra 30% water cooling area will help reduce temperature in the exhaust exit area allowing for longer gasket life.



100% Complete Set
GM V6 Conversion Kit
No. 58992 \$ call for price
Cast Iron
No. 59992 \$ call for price
Aluminum



100% Complete Set
GM V8 Conversion Kit
No. 58990 \$ call for price
Cast Iron
No. 59990 \$ call for price
Aluminum



100% Complete Set
OMC V6 Conversion Kit
No. 58994 \$ call for price
Cast Iron



100% Complete Set
GM V6 w/ 3\"/>



100% Complete Set
GM V8 SB w/ 3\"/>



100% Complete Set
GM V8 BB w/ 3\"/>



100% Complete Set
GM V6 w/ 4\"/>



100% Complete Set
GM V8 SB w/ 4\"/>



100% Complete Set
GM V8 BB w/ 4\"/>



100% Complete Set
OMC GM V8 SB
No. 58410 \$ call for price
Cast Iron



100% Complete Set
Volvo GM VG to 1993
No. 58640 \$ call for price
Cast Iron



100% Complete Set
Ford V8 302/351 Carb
No. 58490 \$ call for price
Cast Iron



100% Complete Set
Volvo GM VB to 1993
No. 58630 \$ call for price
Cast Iron



100% Complete Set
OMC/Volvo GM V8 5.7L
No. 58430 \$ call for price
Cast Iron

100% Complete Set
Ford V8 302/351 EFI
No. 58491 \$ call for price
Cast Iron

Buy GLM Parts Here!

CALIFORNIA
CP Performance - Rossmore Park
707-585-5871
sales@cpperformance.com

FLORIDA
Bounty - N Ft. Myers
800-997-5881
bountymanhdsdistributors.com
ERW - Dana Beach
800-940-4379
marine@erwparts.com
Glenn Mar - Largo
800-282-023
glennmarine.com
Jemys Marine - Ft. Lauderdale
800-432-2231
jemysmarine.com

KANSAS
US Boatworks - Kansas City
913-342-0011
boatengine.com

MASSACHUSETTS
Doug Russell - Worcester
508-791-4917
dougussell.com

NORTH CAROLINA
Basic Power - Harkers Island
252-504-3355
basicpower.com

NEW JERSEY
Jemys Marine - Lakewood
888-244-4735
jemysmarine.com
MESCO - Thornfare
856-853-8320
mesconet.com

NEW YORK
Lighthouse - Riverhead
631-722-5700
partman.com
Seacoast - Underhust
631-884-1003

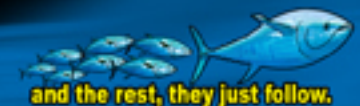
OHIO
Hem Marine - Fairfield
800-582-2798
hemmarine.com

OREGON
Cook Engine - Portland
503-289-8466
cookingins.com

SOUTH CAROLINA
Jemys Marine - Charleston
800-788-2231
jemysmarine.com

TEXAS
Palmer Power - Houston
800-364-4637
sales@palmerpower.com

WASHINGTON
Harbor Marine - Everett
425-259-3265
harbormarineparts.com

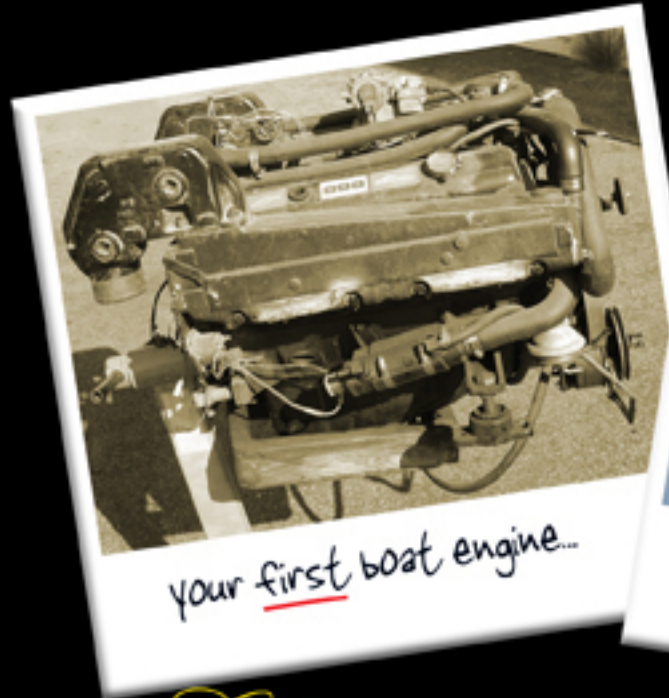


705 Los Angeles Ave., Monrovia, CA 91016
Tele (626) 357-0077, Fax (626) 357-0600
E-mail info@glmmarine.com

www.glmmarine.com



The Evolution of a Dream



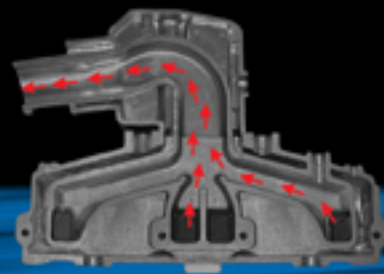
Classic boat engines never die, they evolve into restoration projects! When you are ready, we will be there every step of the way. GLM Products, Inc.

Convert V6 Single-Piece or VB Log Style Manifolds...



...to GLMs **MORE EFFICIENT** Center Rise Manifolds

Exhaust Gases Have a More Direct Path to Exit



100% Complete Conversion Kits
2 Manifolds, 2 Elbows/Risers
All Hardware, Hoses & Gaskets



3YR
WARRANTY
FOR ALL CAST IRON
MANIFOLD/ELBOWS



100% Complete Set
GM V6 Conversion Kit
No. 58992 \$ call for price
Cast Iron
No. 59992 \$ call for price
Aluminum



100% Complete Set
GM VB Conversion Kit
No. 58990 \$ call for price
Cast Iron
No. 59990 \$ call for price
Aluminum



100% Complete Set
OMC V6 Conversion Kit
No. 58994 \$ call for price
Cast Iron



100% Complete Set
GM V6 w/ 3" Riser
No. 58221 \$ call for price
Cast Iron
No. 59223 \$ call for price
Aluminum



100% Complete Set
GM VB SB w/ 3" Riser
No. 58231 \$ call for price
Cast Iron
No. 59233 \$ call for price
Aluminum



100% Complete Set
GM VB BB w/ 3" Riser
No. 58241 \$ call for price
Cast Iron
No. 59243 \$ call for price
Aluminum



100% Complete Set
GM V6 w/ 4" Riser
No. 58222 \$ call for price
Cast Iron
No. 59225 \$ call for price
Aluminum



100% Complete Set
GM VB SB w/ 4" Riser
No. 58232 \$ call for price
Cast Iron
No. 59235 \$ call for price
Aluminum



100% Complete Set
GM VB BB w/ 4" Riser
No. 58242 \$ call for price
Cast Iron
No. 59245 \$ call for price
Aluminum



100% Complete Set
OMC GM V8 SB
No. 58410 \$ call for price
Cast Iron



100% Complete Set
Volvo GM VG to 1993
No. 58440 \$ call for price
Cast Iron



100% Complete Set
Ford V8 302/351 Carb
No. 58490 \$ call for price
Cast Iron



100% Complete Set
Volvo GM VB to 1993
No. 58630 \$ call for price
Cast Iron

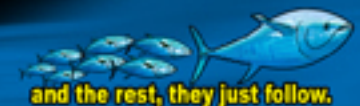


100% Complete Set
OMC/Volvo GM V8 5.7L
No. 58430 \$ call for price
Cast Iron



100% Complete Set
Ford V8 302/351 EFI
No. 58491 \$ call for price
Cast Iron

➔ 100% Complete Sets Include
2 Manifolds, 2 Elbow/Risers, All Gaskets & Hardware



705 Los Angeles Ave., Monrovia, CA 91016
Tele (626) 357-0077, Fax (626) 357-0600
E-mail info@glmmarine.com

Buy GLM Parts Here!

CALIFORNIA
CP Performance - Rossmore Park
707-585-9871
sales@cpperformance.com

FLORIDA
Bounty - N Ft. Myers
800-997-5888
bountymanhandedistributors.com
ERW - Dana Beach
800-940-4379
msmarine@erwparts.com
Glenn Mar - Largo
800-282-023
glmmarine.com
Jemp Marine - Ft. Lauderdale
800-432-2231
jempmarine.com

KANSAS
US Boatworks - Kansas City
913-342-0011
boatengine.com

MASSACHUSETTS
Doug Russell - Worcester
508-791-4917
dougrrussell.com

NORTH CAROLINA
Basic Power - Harkers Island
252-504-3355
basicpower.com

NEW JERSEY
Jemp Marine - Lakewood
888-244-4735
jempmarine.com
MESCO - Thornfare
856-853-8320
mesconet.com

NEW YORK
Lighthouse - Riverhead
631-722-5700
partman.com
Seacoast - Underhust
631-884-1003

OHIO
Hem Marine - Fairfield
800-582-2798
hemmarine.com

OREGON
Cook Engine - Portland
503-289-8466
cookingins.com

SOUTH CAROLINA
Jemp Marine - Charleston
800-788-2231
jempmarine.com

TEXAS
Palmer Power - Houston
800-364-4637
sales@palmerpower.com

WASHINGTON
Harbor Marine - Everett
425-259-3265
harbormarineparts.com

GLM[®]

GLM's Aluminum Anode Kits

REDUCE WASTE WITH GLMs LONGER LASTING ALUMINUM ANODES

For Salt & Brackish Water



We use "Only the Best" Alloy Metals in the Aftermarket

Fe	0.12% max	Ti	0.025% max
Si	0.08% max	Others	0.02% max
Cu	0.01% max	Al	Balance
Zn	3.0-5.0%	Potential	1.05 volts
In	0.01-0.025%	Capacity	2680A-h/Kg

Aluminum Anode Kit All Alpha One Gen II



No. 2722 \$ call for price
OEM 888756001

Aluminum Anode Kit All Bravo I



No. 2724 \$ call for price
OEM 888756001

Aluminum Anode Kit Bravo II (1988 & Up) Bravo III (1995-2002)



No. 2725 \$ call for price
OEM 888756001

Aluminum Anode Kit MR / Alpha One (1984-1990)



No. 2754 \$ call for price
OEM 888756002

Aluminum Anode Kit Bravo III (2003 & Up)



No. 2891 \$ call for price
OEM 88876002

Aluminum Anode Kit Stringer (1978-1985)



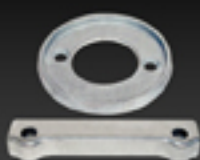
No. 2892 \$ call for price
OEM N/A

Aluminum Anode Kit Cobra (1985-1993)



No. 2893 \$ call for price
OEM N/A

Aluminum Anode Kit AQ250, 270, 270T, 275



No. 2895 \$ call for price
OEM N/A

Aluminum Anode Kit AQ280, 280T, 280PT



No. 2896 \$ call for price
OEM N/A

Aluminum Anode Kit AQ290, 290A



No. 2897 \$ call for price
OEM N/A

Aluminum Anode Kit AQ280DP



No. 2898 \$ call for price
OEM N/A

Aluminum Anode Kit AQ290DP



No. 2899 \$ call for price
OEM N/A

Buy GLM Parts Here!

CALIFORNIA
CP Performance - Robert Park
707-585-9871
sales@cpperformance.com

FLORIDA
Bounty - N. Ft. Myers
800-997-5881
bountymarineistributors.com
ERW - Dana Beach
800-940-4379
msmarine@erwparts.com
Glenn Mar - Largo
800-282-0223
glennmarmarine.com
Jenys Marine - Ft. Lauderdale
800-432-2231
jenysmarine.com

KANSAS
US Boatworks - Kansas City
913-342-0011
boatengines.com

MASSACHUSETTS
Doug Russell - Worcester
508-791-4917
dougussell.com

NORTH CAROLINA
Basic Power -arkers Island
252-504-3355
basicpower.com

NEW JERSEY
Jenys Marine - Lakewood
888-244-4735
jenysmarine.com
MESCO - Thornfare
856-853-8320
mesconet.com

NEW YORK
Lighthouse - Riverhead
631-722-5700
partman.com
Seacoast - Underhust
631-884-1013

OHIO
Hem Marine - Fairfield
800-582-2798
hemmarine.com

OREGON
Cook Engine - Portland
503-289-8466
cookengine.com

SOUTH CAROLINA
Jenys Marine - Charleston
800-788-2231
jenysmarine.com

TEXAS
Palmer Power - Houston
800-364-4637
sales@palmerpower.com

WASHINGTON
Harbor Marine - Everett
425-259-3285
harbormarineparts.com



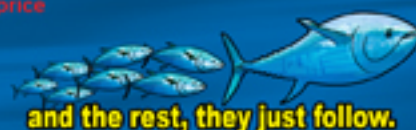
NEW! Clamshell Packaging

Hang, Stand, Stack or Pack with the Most Versatile Packaging in the Industry.



Anodes Brochure

Please visit www.glmmarine.com for our Anode Line!



705 Los Angeles Ave., Monrovia, CA 91016
Tele (626) 357-0077, Fax (626) 357-0600
E-mail: info@glmmarine.com

www.glmmarine.com



GLM's Brass Seawater Pumps

GLM's Brass Seawater Pump is a **DIRECT REPLACEMENT** of the OEM Plastic Pump.



- ✓ Stronger Material
- ✓ New & Improved
- ✓ Higher Quality
- ✓ Stainless Steel Fittings
- ✓ Longer Lasting
- ✓ More Durable

Seawater Pump Rebuild Kit

No. 12088 \$ call for price
OEM 47-80751A4

For ALL BRAVO drives.

For Mercruiser 1-piece & 2-piece pumps.

For GLM 1-piece brass body pump



Stainless Steel Screws



New Gasket



Brass Impeller Housing

Seawater Pump Assembly

No. 12097 \$ call for price
OEM 46-80751A9

For V6/V8 Engines with Serpentine Belt.

Body Cast Brass
Impellers Neoprene
Shaft Stainless Steel
Ports 1/4" Stainless Steel
Bearing Steel Ball
Bearing Housing Cast Brass



Seawater Pump Assembly

No. 12093 \$ call for price
OEM 46-80751A2, 46-72774A32

For V6/V8 Engines with V-Belt.

Body Cast Brass
Impellers Neoprene
Shaft Stainless Steel
Ports 1/4" Stainless Steel
Bearing Steel Ball
Bearing Housing Cast Brass



Buy GLM Parts Here!

CALIFORNIA
Mason Marine - Pasadena
866-578-9070
www.MasonMarine.net
CP Performance - Robert Park
707-585-9871
sales@cpperformance.com

FLORIDA
Bounty - Ft. Myers
800-997-5881
bountymarineistributors.com
ERW - Dana Beach
800-940-4379
mmarine@erwparts.com
Glem Mar - Largo
800-282-0123
glenmarmarine.com
Jermys Marine - Ft. Lauderdale
800-432-2231
jermysmarine.com

KANSAS
US Boatworks - Kansas City
913-342-0011
boatengine.com

MASSACHUSETTS
Doug Russell - Worcester
508-791-4917
dougussell.com

NORTH CAROLINA
Basic Power - Harkers Island
252-504-3355
basicpower.com

NEW JERSEY
Jermys Marine - Lakewood
888-244-4735
jermysmarine.com
MESCO - Thornfare
856-853-8320
mesconet.com

NEW YORK
Lighthouse - Riverhead
631-722-5700
partman.com
Seacoast - Underhust
631-884-1013

OHIO
Hem Marine - Fairfield
800-582-2798
hemmarine.com

OREGON
Cook Engine - Portland
503-289-8466
cookenline.com

SOUTH CAROLINA
Jermys Marine - Charleston
800-788-2231
jermysmarine.com

TEXAS
Palmer Power - Houston
800-364-4637
sales.palmerpower@earthlink.net

WASHINGTON
Harbor Marine - Everett
425-259-3285
harbormarineparts.com

GLM's Water Recirculating Pumps

BRAND NEW!
Not Rebuilt!

- ✓ Stainless Steel Backing Plate
- ✓ Bi-Directional & Balanced
- ✓ Machined Brass Impeller
- ✓ Stainless Banded Ceramic Seal Seat
- ✓ Stainless Steel Seal Cup & Spring
- ✓ Epoxy Painted Pump Housing

Recirculating Water Pump

No. 5100 \$ call for price
OEM 884727, 385407

Chevrolet Inline 4 & Inline 6 Cyl. Engines

63 CID - 2.5 Liter
181 CID - 3.0 Liter
250 CID - 4.0 Liter



Recirculating Water Pump

No. 5201 \$ call for price
OEM 850399-1, 3853850

Chevrolet V6 & V8 Small Block Engines
Fits Both Metal & Composite Timing Chain Cover

229 CID - 3.8 Liter
262 CID - 4.3 Liter
305 CID - 5.0 Liter
350 CID - 5.7 Liter



New Style

Recirculating Water Pump

No. 5301 \$ call for price
OEM 150454-1, 3855991

Chevrolet VB Big Block Engines
Fits both Tin & Aluminum Timing Chain Cover

409 CID - 6.6 Liter
427 CID - 6.9 Liter
454 CID - 7.4 Liter
502 CID - 8.2 Liter



New Style

Recirculating Water Pump

No. 5400 \$ call for price
OEM 883885, 3853796

Ford VB Small Block Engines

302 CID - 5.0 Liter
351 CID - 5.8 Liter



GLM No. 12000 Show

Complete Water Pump Service Kits & More...

Please visit www.glmmarine.com for our full Water Pump Line including Complete Kits, Service Kits, Individual Components for both Belt / Drive Mounted Pumps and Complete Gasket Sets for Recirculating Pumps.



www.glmmarine.com

705 Los Angeles Ave., Monrovia, CA 91016
Tele (626) 357-0077, Fax (626) 357-0600
E-mail: info@glmmarine.com

www.glmmarine.com

GLM

Superior Marine Manifolds

Increase Performance - Reduce Back Pressure
Add More Horsepower

Buy GLM
Parts Here!

CALIFORNIA
Mason Marine - Pasadena
866-578-9070
www.MasonMarine.net
CP Performance - Robert Park
707-585-9871
sales@cpperformance.com

FLORIDA
Bounty - N Ft. Myers
800-997-5881
bountymarineistributors.com
ERW - Dana Beach
800-940-4379
mmarine@erwparts.com
Glenn Mar - Largo
800-282-0223
glennmarine.com
Jemys Marine - Ft. Lauderdale
800-432-2231
jemysmarine.com

KANSAS
US Boatworks - Kansas City
913-342-0011
boatengines.com

MASSACHUSETTS
Doug Russell - Worcester
508-791-4917
dougussell.com

NORTH CAROLINA
Bank Power - Harkers Island
252-504-3355
bankpower.com

NEW JERSEY
Jemys Marine - Lakewood
800-244-4735
jemysmarine.com
MESCO - Thorofare
856-853-8320
mesconet.com

NEW YORK
Lighthouse - Riverhead
631-722-5700
partman.com
Seacoast - Linderhurst
631-884-103

OHIO
Hem Marine - Fairfield
800-582-2798
hemmarine.com

OREGON
Cook Engine - Portland
503-289-8466
cookengine.com

SOUTH CAROLINA
Jemys Marine - Charleston
800-788-2231
jemysmarine.com

TEXAS
Palmer Power - Houston
800-364-4637
sales.palmerpower@earthlink.net

WASHINGTON
Harbor Marine - Everett
425-259-3285
harbormarineparts.com

GLM's Conversion Kits



100% Complete Set

GM V6 Conversion Kit
No. 58992 Cast Iron \$ call for price
No. 59992 Aluminum \$ call for price



100% Complete Set

GM V8 Conversion Kit
No. 58990 Cast Iron \$ call for price
No. 59990 Aluminum \$ call for price



100% Complete Set

OMC V6 Conversion Kit
No. 58994 Cast Iron \$ call for price



100% Complete Set

OMC V8 Conversion Kit
No. 58995 Cast Iron \$ call for price

100% Complete Sets



100% Complete Set

GM V6 w/ 3" Riser
No. 58221 Cast Iron \$ call for price
No. 59223 Aluminum \$ call for price



100% Complete Set

GM V8 SB w/ 3" Riser
No. 58231 Cast Iron \$ call for price
No. 59233 Aluminum \$ call for price



100% Complete Set

GM V8 BB w/ 3" Riser
No. 58241 Cast Iron \$ call for price
No. 59243 Aluminum \$ call for price



100% Complete Set

Ford V8 302/351 (Carb)
No. 58490 Cast Iron \$ call for price



100% Complete Set

GM V6 w/ 4" Riser
No. 58222 Cast Iron \$ call for price
No. 59225 Aluminum \$ call for price



100% Complete Set

GM V8 SB w/ 4" Riser
No. 58232 Cast Iron \$ call for price
No. 59235 Aluminum \$ call for price



100% Complete Set

GM V8 BB w/ 4" Riser
No. 58242 Cast Iron \$ call for price
No. 59245 Aluminum \$ call for price



100% Complete Set

Ford V8 302/351 (EFI)
No. 58491 Cast Iron \$ call for price



100% Complete Set

OMC GM V8 SB
No. 58410 Cast Iron \$ call for price



100% Complete Set

Volvo GM V6 to 1993
No. 58540 Cast Iron \$ call for price



100% Complete Set

Volvo GM V8 to 1993
No. 58630 Cast Iron \$ call for price



100% Complete Set

OMC/Volvo GM V8 5.7L
No. 58430 Cast Iron \$ call for price

GLM's Conversion Kits & Complete Sets Include:
2 Manifolds, 2 Elbow/Risers, All Gaskets & Hardware



3YR
WARRANTY
FOR ALL CAST IRON
MANIFOLD/ELBOWS

and the rest, they just follow.

GLM
www.glmmarine.com

705 Los Angeles Ave., Monrovia, CA 91016
Tele (626) 357-0077, Fax (626) 357-0600
E-mail info@glmmarine.com

www.glmmarine.com

GLM

Quality Replacement Parts for

YAMAHA

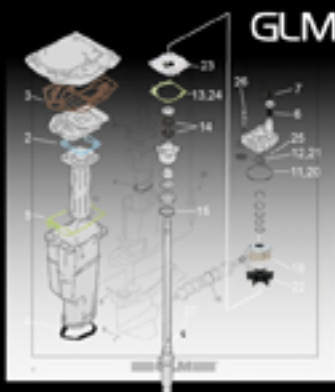
(Suzuki® / Honda® / Tohatsu® / Nissan®)

NEW!
for
2010

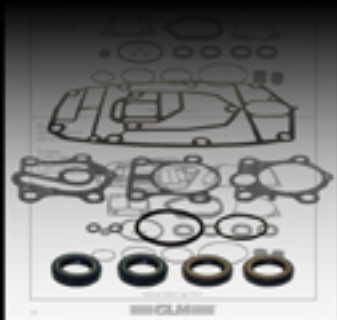


On-Line Catalog Now Available!

GLM's Yamaha Replacement Parts Catalog Includes:



**Gearcase
Exploded Views**



**Seal Kits &
Components**



**Water Pump Kits
& Impellers**



**Anodes, Prop Kits
& Thermostats**



Pistons



Head Gaskets



Fuel Filters



Cross References



Buy GLM Parts Here!

CALIFORNIA

Mason Marine - Pasadena
866-578-9070
www.MasonMarine.net

CP Performance - Robert Park
707-585-9871
sales@cpperformance.com

FLORIDA

Bounty - N Ft. Myers
800-997-5881
bountymarineistributors.com

ERW - Dana Beach
800-940-4379
marine@erwparts.com

Glenn Mar - Largo
800-282-0223
glennmarine.com

Jermys Marine - Ft. Lauderdale
800-432-2231
jermysmarine.com

KANSAS

US Boatworks - Kansas City
913-342-0011
boatengine.com

MASSACHUSETTS

Doug Russell - Worcester
508-791-4917
dougussell.com

NORTH CAROLINA

Basic Power -arkers Island
252-504-3355
basicpower.com

NEW JERSEY

Jermys Marine - Lakewood
888-244-4735
jermysmarine.com

MESCO - Thorofare
856-853-8320
mesconet.com

NEW YORK

Lighthouse - Riverhead
631-722-5700
partman.com

Seacoast - Underhust
631-884-1013

OHIO

Hem Marine - Fairfield
800-582-2798
hemmarine.com

OREGON

Cook Engine - Portland
503-289-8466
cookengine.com

SOUTH CAROLINA

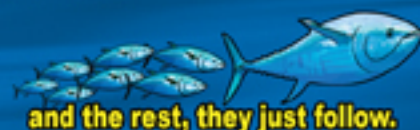
Jermys Marine - Charleston
800-788-2231
jermysmarine.com

TEXAS

Palmer Power - Houston
800-364-4637
salespalmerpower@earthlink.net

WASHINGTON

Harbor Marine - Everett
425-259-3285
harbormarineparts.com



705 Los Angeles Ave., Monrovia, CA 91016
Tele (626) 357-0077, Fax (626) 357-0600
E-mail info@glmmarine.com

www.glmmarine.com



Come visit us at IBEX Booth # 74!



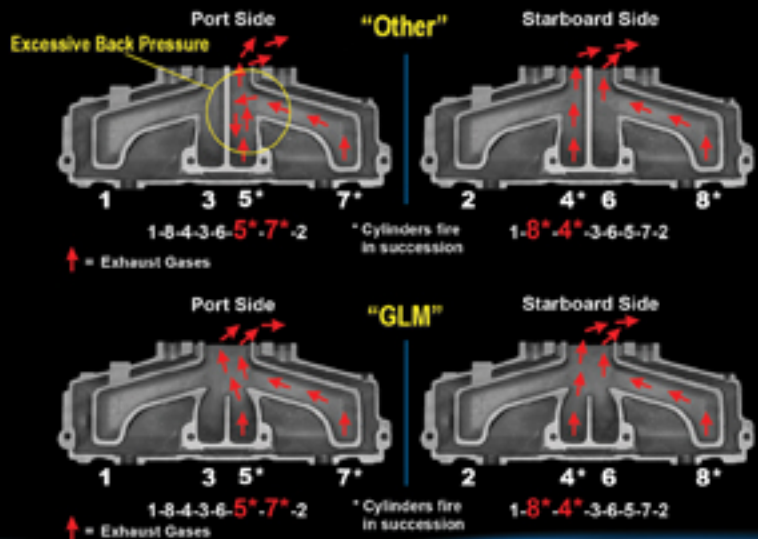
Superior Marine Manifolds

3YR
WARRANTY
FOR ALL CAST IRON
MANIFOLD/ELBOWS



Increase Performance - Reduce Back Pressure
Add More Horsepower

Exhaust System Evaluation



V8 GM Small Block

Our fully tuned design guides exhaust gasses directly to riser without turbulence and back pressure. This increases the engines performance up to 10%. In the meantime, an additional 40% water cooling area will decrease the entire manifold body temperature significantly.

V8 GM Big Block

Our fully tuned design will reduce turbulence and enhance flow for added maximum performance. An extra 30% water cooling area will help reduce temperature in the exhaust exit area allowing for longer gasket life.

GLM's Conversion Kits

Convert V6 Single-Piece or V8 Log Style Manifolds...



...to GLM's More Efficient Center Rise Manifolds



100% Complete Manifold Sets



Exhaust Elbows/Risers



GLM's Conversion Kits & Complete Manifold Sets Include:
2 Manifolds, 2 Elbow/Risers, All Gaskets & Hardware



www.glmmarine.com
705 Los Angeles Ave, Monrovia, CA 91016
Tel: (626) 357-0077, Fax: (626) 357-0600
E-mail: info@glmmarine.com