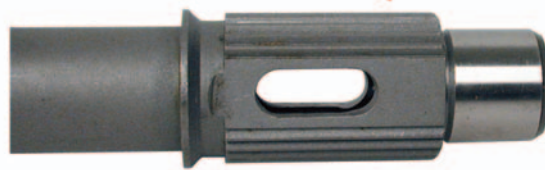


Instruction Sheet for V4 Prop Shaft & Clutch Dog

**OMC Cobra 4-Cyl., 3.0L (1986-90),
OMC Stringer 4-Cyl. w/ Mech.Shift (1978-85)
Johnson/Evinrude V4 90° (1978-98)**

CORRECT ASSEMBLY

No. 22416
Prop Shaft
OEM: 436888

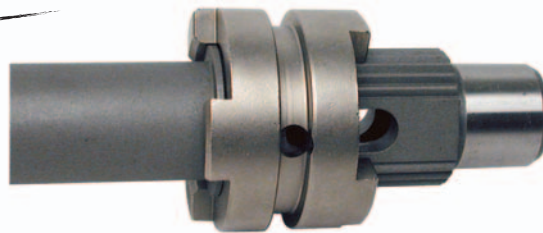


Align pin hole and splines. Slide completely down.

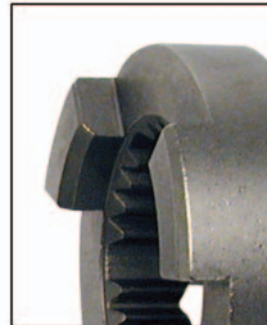
No. 22633
Clutch Dog
OEM: 323664



The Right way!



Lugs seat all the way down, passed the ledge of the Prop Shaft.



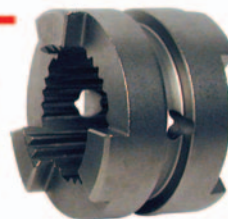
Notice bevel cut and No splines on the lugs.

INCORRECT ASSEMBLY

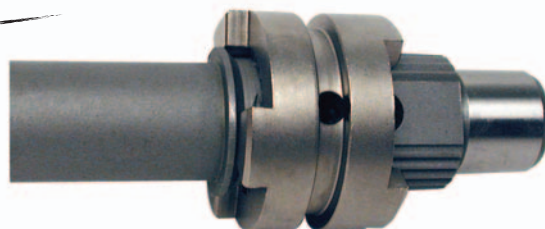
No. 22416
Prop Shaft
OEM: 436888



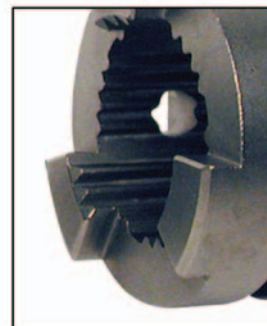
No. 22633
Clutch Dog
OEM: 323664



The Wrong way!



Lugs DO NOT seat all the way down, they rest on top of the ledge.



Notice splines and No bevel cut on the lugs. This is the wrong side down.