



On the Horizon

Vol. II - Issue 1

The Aftermarket Marine Parts Newsletter

NEW PRODUCTS

NEW!



**WATER PUMP KIT
w/o HOUSING w/ BOLTS**

GLM No. 12278
OEM: 882-W0078-A1

For Yamaha 9.9-30 HP



(Pgs. 39, 60)

NEW!



**WATER PUMP KIT
w/o HOUSING w/o BOLTS**

GLM No. 12281
OEM: 882-W0078-A2,
882-W0078-A3

For Yamaha 9.9-30 HP



(Pgs. 39, 60)

NEW!



**WATER PUMP KIT
without HOUSING**

GLM No. 12275
OEM: 87F-W0078-00-00

For Yamaha 40-100 HP



(Pgs. 52, 61)

NEW!



**COMPLETE WATER
PUMP KIT**

GLM No. 12299
OEM: 8N8-W0078-00-00 +
81A-44311-00-00

For Yamaha V4 (115-130 HP)



(Pgs. 6, 7, 55, 61)

NEW!



**WATER PUMP KIT
without HOUSING**

GLM No. 12264
OEM: 8N8-W0078-00-00

For Yamaha V4 (115-130 HP)



(Pgs. 6, 7, 55, 61)

NEW!



**WATER PUMP KIT
without HOUSING**

GLM No. 12054
OEM: 8E5-W0078-A1-00

For Yamaha V4 (115-130 HP)

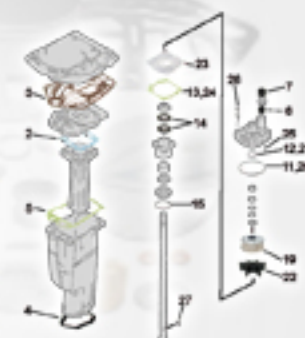


(Pgs. 10, 11, 58, 61)

PROMOTIONS

YAMAHA CATALOG (Printed Version)

Get your
Hardcopy
Today!



Available January 15th!

MESSAGE IN THE BOTTLE

Over the past two decades, GLM has committed itself to producing high quality and cost effective aftermarket marine products. Every year we add a significant number of new products to our offering so that we can keep up with the ever changing need for aftermarket marine parts. 2012 will be no exception; we will continue to expand our line to meet our customers needs while we maintain our high quality standards.

Sincerely,
Mark Warden
General Manager



2012 TRADESHOWS

October - IBEX - Kentucky Expo Center,
Louisville, Kentucky USA (Booth info coming...)



November - METS - Amsterdam Convention Center
Amsterdam, Netherlands (Booth info coming...)



TECH TIPS

Periodic examination of anodes should be performed throughout the boating season. Anodes are sacrificial and protect from corrosion. Failure to maintain anodes will result in premature product failure and voiding of the warranty.



GLM CATALOG SERIES

Manifold Catalog



10-24-11

Mercury / Mariner / Force



1-26-11

Johnson / Evinrude



8-30-11

OMC / Volvo Penta



10-13-11

MerCruiser



10-13-11

Yamaha



2-24-11

Aluminum & Magnesium Anodes



10-7-10

REVISED